



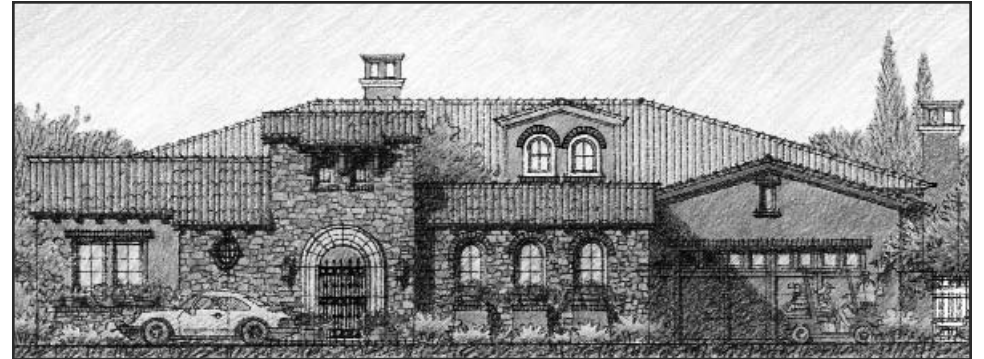
Early California - A



Italianate - B



Italianate - E



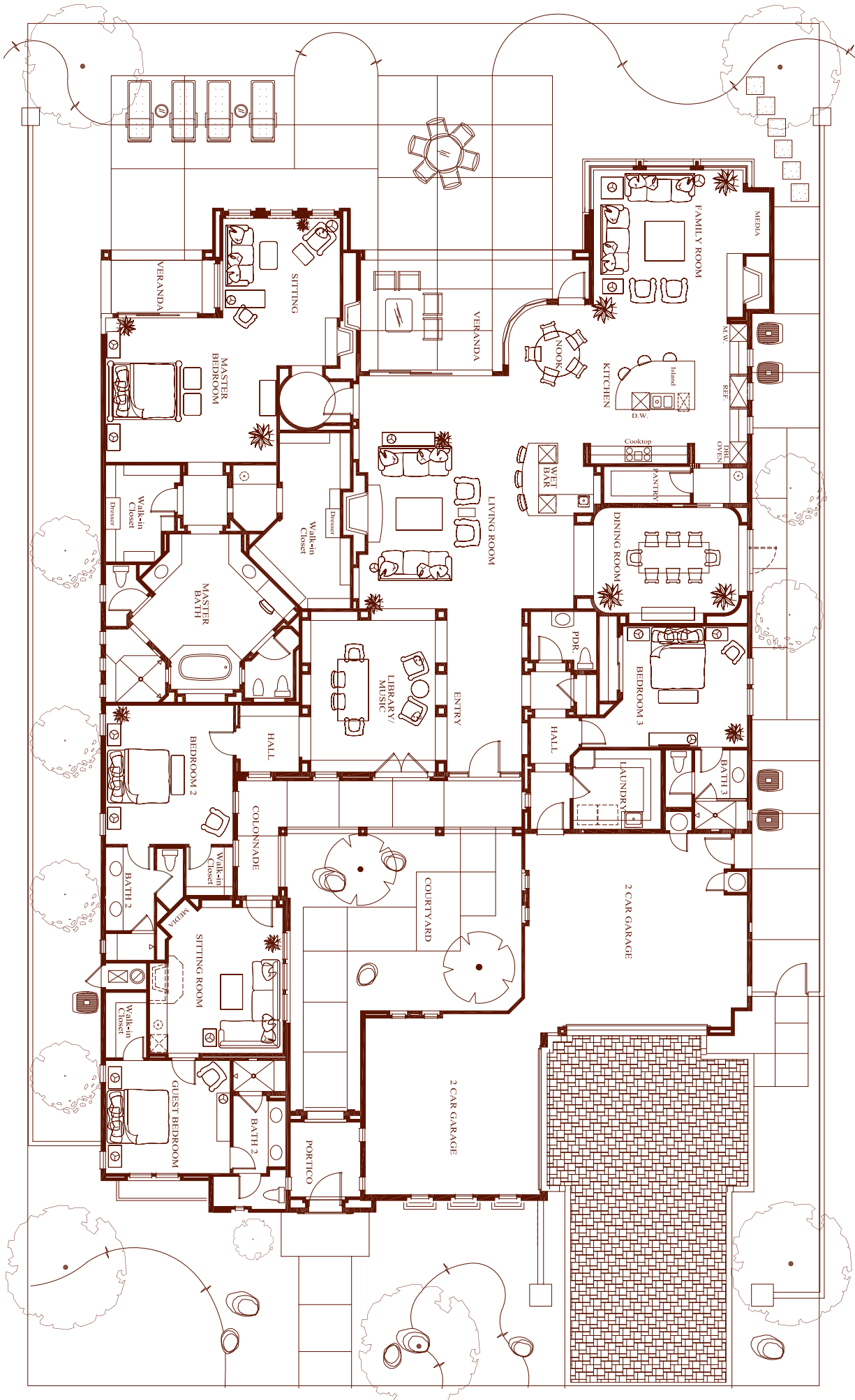
Tuscan - C



Tuscan - D



Residence 922-R



Tuscan Reverse Elevation shown - Plans vary per elevation

ARCHITECTURAL AND DESIGN FEATURES

Private, gated entry courtyard
Fireplace in courtyard
Fully landscaped yards with programmable irrigation system
Eight-foot raised-panel, solid-core interior doors with lever-style door hardware
Solid core raised panel wardrobe closet doors
Ten-foot high sliding glass doors
Porcelain tile flooring in foyer, kitchen, wet bar and laundry room
Wood burning fireplaces with gas connection and pre-cast decorative surround
Pre-cast concrete pavers on all driveways

KITCHEN, WET BAR AND LAUNDRY

Slab granite countertops with 2 1/4" bullnose edge in kitchen and wet bar
Built-in appliances including:
48-inch side-by-side SubZero refrigerator/freezer
48-inch commercial style Wolf gas cooktop
30-inch Wolf double convection ovens
Separate Wolf microwave oven
Multicycle sound insulated Asko dishwasher

Cast-iron Kohler kitchen sink with pull-out spray faucet
Sit-down wet bar with under-counter SubZero built-in refrigerator with ice maker and SubZero wine chiller
Laundry room cabinetry with solid hardwood doors, natural stone slab countertops and cast-iron utility sink with pull-out spray faucet

MASTER SUITE, SECONDARY BEDROOMS, GUESTHOUSE AND BATH FEATURES

Spacious master bedroom suite includes retreat area, large media niche and wood burning fireplace with gas connection
Two separate water closet rooms (one with bidet) in master bath
Soaking tub with natural stone tile surround in master bath
Natural stone slab countertop, stone tile shower and tub surround in master bath
Spacious walk-in closets with built-in dressers in master suite
All secondary bedrooms feature private baths with compartmentalized water closets
Porcelain tile showers and natural stone slab countertops in secondary baths
Pedestal sink in powder bath
Custom frameless shower enclosures throughout

OTHER QUALITY FEATURES

Custom European-style cabinetry with solid hardwood doors
Multiple-zone, energy-efficient, electric air conditioning and gas forced-air heating with digital thermostats
Energy efficient, low E, dual glazed Anderson wood windows and french doors per plan
High-quality Fleetwood, low E, dual glazed patio sliding glass doors
Pre-wired for Verizon Fios fiber-optic technology for ultra high speed internet access
Structured multimedia/telecommunications wiring and control center for digital broadband access, computers, telephones, satellite and cable television
Individual home digital security system
Two gas-fired water heaters with recirculating hot water system
Four car garage with finished interiors and roll-up insulated garage doors with automatic openers

DESIGN CENTER

A wide range of options, upgrades and interior design are available through our Design Center.

Toscana
COUNTRY CLUB

THE TOTAL NUMBER, DESIGN AND LOCATION OF HOMES; UNIT MIX; AND THE LOCATION, DESIGN AND LAYOUT OF RECREATIONAL FACILITIES MAY BE CHANGED DUE TO A NUMBER OF CIRCUMSTANCES, INCLUDING GOVERNMENTAL REQUIREMENTS AND MARKET DEMAND. ELEVATIONS ARE AN ARTIST CONCEPTIONS AND DIMENSIONS ARE APPROXIMATE IN NATURE AND ARE NOT INTENDED FOR FINAL REFERENCE. SUNRISE COMPANY/TOSCANA COUNTRY CLUB RESERVES THE RIGHT TO CHANGE HOMESITE AND HOME PRICES AND MAKE MODIFICATIONS IN FLOORPLANS, MATERIALS AND SPECIFICATIONS AT ANY TIME WITHOUT PRIOR NOTICE. OWNERSHIP OF A HOME OR HOMESITE DOES NOT INCLUDE COUNTRY CLUB MEMBERSHIP OR RIGHTS IN THE COUNTRY CLUB FACILITIES. VOID WHERE PROHIBITED BY LAW. 10/2007



For Over Thirty-Five Years, Builder of America's Finest Country Club Communities

