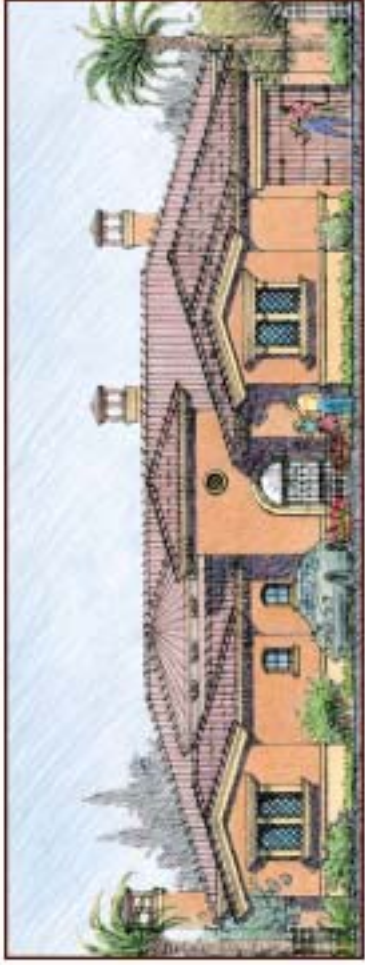




Early California - A2



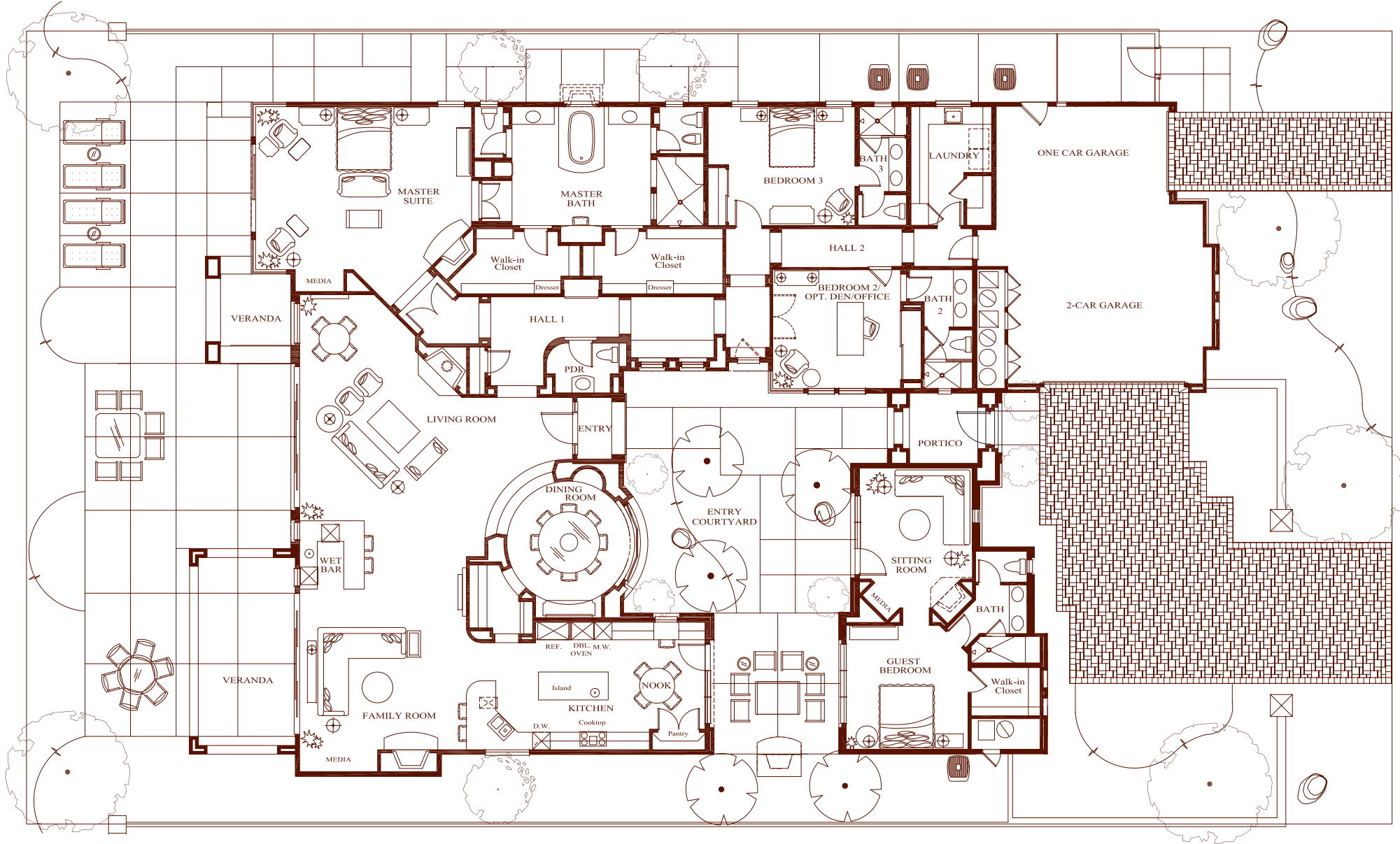
Italianate - B2 - Model



Tuscan - C2



Residence 921-R



ARCHITECTURAL AND DESIGN FEATURES

Private, gated entry courtyard

Fireplace in courtyard

Fully landscaped yards with programmable irrigation system

Eight-foot raised-panel, solid-core interior doors with lever-style door hardware

Solid core raised panel wardrobe closet doors

Ten-foot high sliding glass doors

Porcelain tile flooring in foyer, kitchen, wet bar and laundry room

Wood burning fireplaces with gas connection and pre-cast decorative surround

Pre-cast concrete pavers on all driveways

KITCHEN, WET BAR AND LAUNDRY

Slab granite countertops with 2 1/4" bullnose edge in kitchen and wet bar

Built-in appliances including:

48-inch side-by-side SubZero refrigerator/freezer

48-inch commercial style Wolf gas cooktop

30-inch Wolf double convection ovens

Separate Wolf microwave oven

Multicycle sound insulated Asko dishwasher

Cast-iron Kohler kitchen sink with pull-out spray faucet

Sit-down wet bar with under-counter SubZero built-in refrigerator with ice maker and SubZero wine chiller

Laundry room cabinetry with solid hardwood doors, natural stone slab countertops and cast-iron utility sink with pull-out spray faucet

MASTER SUITE, SECONDARY BEDROOMS, GUESTHOUSE AND BATH FEATURES

Spacious master bedroom suite includes retreat area, large media niche and wood burning fireplace with gas connection

Two separate water closet rooms (one with bidet) in master bath

Soaking tub with natural stone tile surround in master bath

Natural stone slab countertop, stone tile shower and tub surround in master bath

Spacious walk-in closets with built-in dressers in master suite

All secondary bedrooms feature private baths with compartmentalized water closets

Porcelain tile showers and natural stone slab countertops in secondary baths

Pedestal sink in powder bath

Custom frameless shower enclosures throughout

OTHER QUALITY FEATURES

Custom European-style cabinetry with solid hardwood doors

Multiple-zone, energy-efficient, electric air conditioning and gas forced-air heating with digital thermostats

Energy efficient, low E, dual glazed Anderson wood windows and french doors per plan

High-quality Fleetwood, low E, dual glazed patio sliding glass doors

Pre-wired for Verizon Fios fiber-optic technology for ultra high speed internet access

Structured multimedia/telecommunications wiring and control center for digital broadband access, computers, telephones, satellite and cable television

Individual home digital security system

Two gas-fired water heaters with recirculating hot water system

Four car garage with finished interiors and roll-up insulated garage doors with automatic openers

DESIGN CENTER

A wide range of options, upgrades and interior design are available through our Design Center.

Toscana
COUNTRY CLUB

THE TOTAL NUMBER, DESIGN AND LOCATION OF HOMES; UNIT MIX; AND THE LOCATION, DESIGN AND LAYOUT OF RECREATIONAL FACILITIES MAY BE CHANGED DUE TO A NUMBER OF CIRCUMSTANCES, INCLUDING GOVERNMENTAL REQUIREMENTS AND MARKET DEMAND. ELEVATIONS ARE AN ARTIST CONCEPTIONS AND DIMENSIONS ARE APPROXIMATE IN NATURE AND ARE NOT INTENDED FOR FINAL REFERENCE. SUNRISE COMPANY/TOSCANA COUNTRY CLUB RESERVES THE RIGHT TO CHANGE HOMESITE AND HOME PRICES AND MAKE MODIFICATIONS IN FLOORPLANS, MATERIALS AND SPECIFICATIONS AT ANY TIME WITHOUT PRIOR NOTICE. OWNERSHIP OF A HOME OR HOMESITE DOES NOT INCLUDE COUNTRY CLUB MEMBERSHIP OR RIGHTS IN THE COUNTRY CLUB FACILITIES. VOID WHERE PROHIBITED BY LAW. 7/2006



For Over Thirty-Five Years, Builder of America's Finest Country Club Communities

