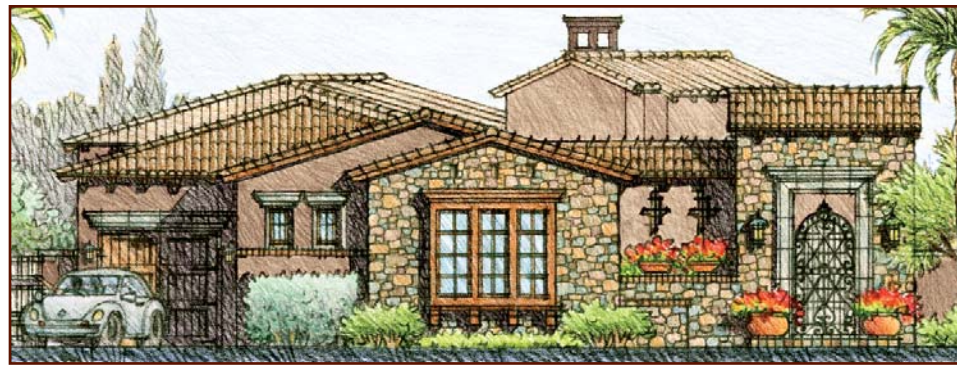




Early California



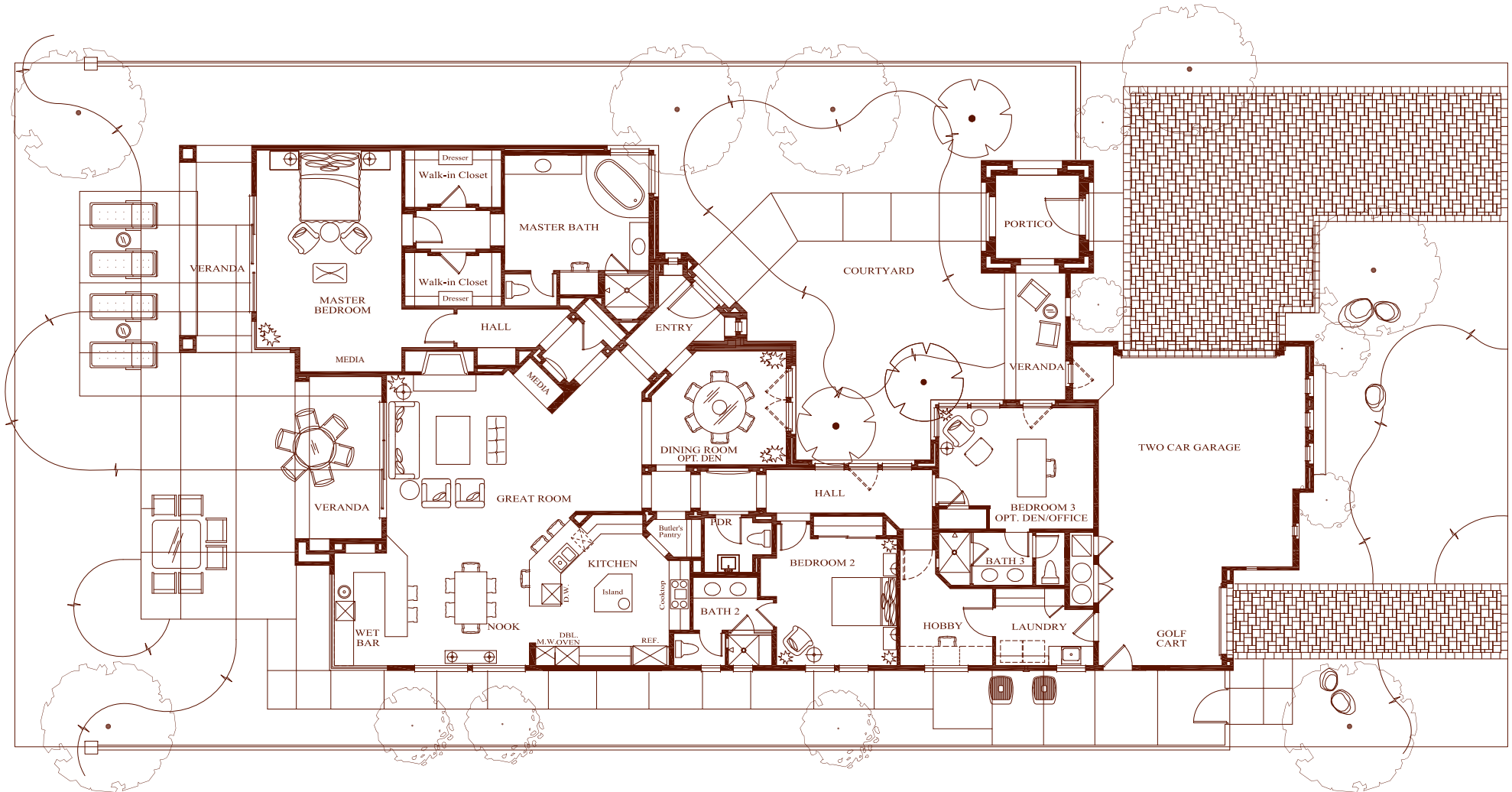
Italianate



Tuscan



Residence 602



ARCHITECTURAL AND DESIGN FEATURES

Private, gated entry courtyard

Fully landscaped yards with programmable irrigation system

Eight-foot raised-panel, solid-core interior doors with lever-style door hardware

Solid core raised panel wardrobe closet doors

Ten-foot high sliding glass doors

Porcelain tile flooring in foyer, kitchen, laundry room and wet bar

Wood-burning fireplace with gas connection and pre-cast decorative surround

Pre-cast stone pavers on driveways

KITCHEN, WET BAR AND LAUNDRY

Slab granite countertops with 1½" bullnose edge in kitchen and wet bar

Built-in GE Monogram appliances including:

42-inch side-by-side refrigerator/freezer with ice and water dispenser

36-inch, 5 burner gas gourmet cooktop

Multicycle sound insulated dishwasher

30-inch double convection ovens

Separate microwave oven

Cast-iron Kohler kitchen sink with pull-out spray faucet

Sit-down wet bar with under-counter GE Monogram built-in refrigerator with ice maker

Laundry room cabinetry with solid hardwood doors, natural stone slab countertops and cast-iron utility sink with pull-out spray faucet

MASTER SUITE, SECONDARY BEDROOMS, GUESTHOUSE AND BATH FEATURES

Natural stone slab countertop, stone tile shower and tub surround in master bath

Spacious his and hers walk-in custom closets with built-in dressers in master suite

Soaking tub in master bath

All secondary bedrooms feature private baths with natural stone slab countertops and compartmentalized water closets

Porcelain tile showers in secondary baths

Custom frameless shower enclosures throughout

Decorative framed mirrors in all baths

Pedestal sink in powder bath

OTHER QUALITY FEATURES

Custom European-style cabinetry with solid hardwood doors

Multiple-zone, energy-efficient, electric air conditioning and gas forced-air heating with digital thermostats

Energy efficient, low E, dual glazed Anderson wood windows and french doors per plan

High-quality Fleetwood, low E, dual glazed patio sliding glass doors

Pre-wired for Verizon Fios fiber-optic technology for ultra high speed internet access

Structured multimedia/telecommunications wiring and control center for digital broadband access, computers, telephones, satellite and cable television

Individual home digital security system

Two gas-fired water heaters with recirculating hot water system

Two car and golf cart garage with finished interiors and roll-up insulated sectional garage doors with automatic openers

DESIGN CENTER

A wide range of options, upgrades and interior design are available through our Design Center.

Toscana
COUNTRY CLUB

THE TOTAL NUMBER, DESIGN AND LOCATION OF HOMES; UNIT MIX; AND THE LOCATION, DESIGN AND LAYOUT OF RECREATIONAL FACILITIES MAY BE CHANGED DUE TO A NUMBER OF CIRCUMSTANCES, INCLUDING GOVERNMENTAL REQUIREMENTS AND MARKET DEMAND. ELEVATIONS ARE AN ARTIST CONCEPTIONS AND DIMENSIONS ARE APPROXIMATE IN NATURE AND ARE NOT INTENDED FOR FINAL REFERENCE. SUNRISE COMPANY/TOSCANA COUNTRY CLUB RESERVES THE RIGHT TO CHANGE HOMESITE AND HOME PRICES AND MAKE MODIFICATIONS IN FLOORPLANS, MATERIALS AND SPECIFICATIONS AT ANY TIME WITHOUT PRIOR NOTICE. OWNERSHIP OF A HOME OR HOMESITE DOES NOT INCLUDE COUNTRY CLUB MEMBERSHIP OR RIGHTS IN THE COUNTRY CLUB FACILITIES. VOID WHERE PROHIBITED BY LAW. 7/2006



For Over Thirty-Five Years, Builder of America's Finest Country Club Communities

